



IL-20R α Polyclonal Antibody

Catalog No	YP-Ab-15934
Isotype	IgG
Reactivity	Human;Rat;Mouse;
Applications	WB;IHC;IF;ELISA
Gene Name	IL20RA
Protein Name	Interleukin-20 receptor subunit alpha
Immunogen	The antiserum was produced against synthesized peptide derived from human IL-20R α . AA range:173-222
Specificity	IL-20R α Polyclonal Antibody detects endogenous levels of IL-20R α protein.
Formulation	Liquid in PBS containing 50% glycerol, 0.5% BSA and 0.02% sodium azide.
Source	Polyclonal, Rabbit,IgG
Purification	The antibody was affinity-purified from rabbit antiserum by affinity-chromatography using epitope-specific immunogen.
Dilution	WB: 1/500 - 1/2000. IHC: 1/100 - 1/300. ELISA: 1/40000.. IF 1:50-200
Concentration	1 mg/ml
Purity	≥90%
Storage Stability	-20°C/1 year
Synonyms	IL20RA; Interleukin-20 receptor subunit alpha; IL-20 receptor subunit alpha; IL-20R-alpha; IL-20RA; Cytokine receptor class-II member 8; Cytokine receptor family 2 member 8; CRF2-8; IL-20R1; ZcytoR7
Observed Band	62kD
Cell Pathway	Membrane ; Single-pass type I membrane protein .
Tissue Specificity	Widely expressed with highest levels in skin and testis and high levels in brain. Highly expressed in psoriatic skin.
Function	function:The IL20RA/IL20RB dimer is a receptor for IL19, IL20 and IL24. The IL20RA/IL10RB dimer is a receptor for IL26.,similarity:Belongs to the type II cytokine receptor family.,similarity:Contains 2 fibronectin type-III domains.,subunit:Heterodimer with IL20RB and heterodimer with IL10RB.,tissue specificity:Widely expressed with highest levels in skin and testis and high levels in brain. Highly expressed in psoriatic skin.,
Background	This gene encodes a member of the type II cytokine receptor family. The encoded protein is a subunit of the receptor for interleukin 20, a cytokine that may be involved in epidermal function. The interleukin 20 receptor is a heterodimeric complex consisting of the encoded protein and interleukin 20 receptor beta. This gene and interleukin 20 receptor beta are highly expressed in skin, and are upregulated in psoriasis. Alternative splicing results in multiple transcript variants.



[provided by RefSeq, Jul 2013],

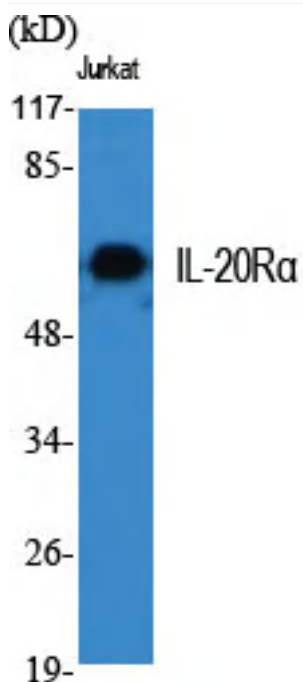
matters needing attention

Avoid repeated freezing and thawing!

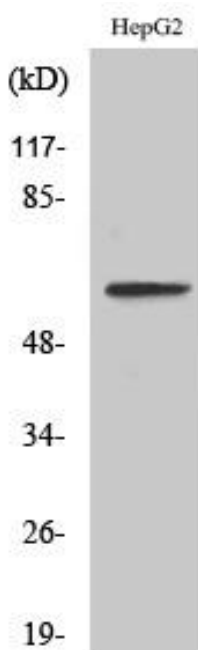
Usage suggestions

This product can be used in immunological reaction related experiments. For more information, please consult technical personnel.

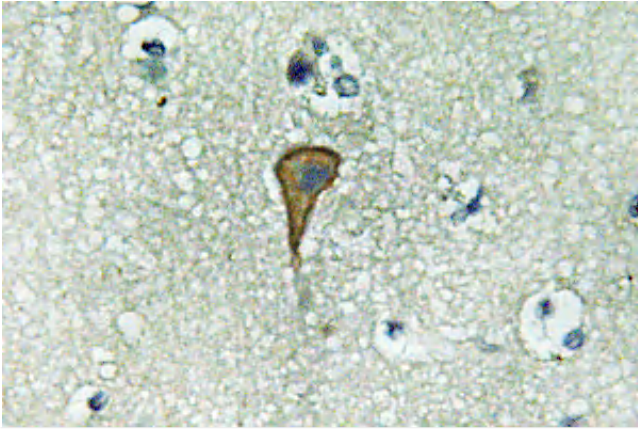
Products Images



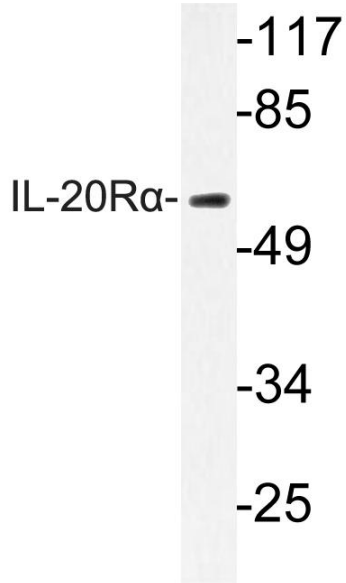
Western Blot analysis of various cells using IL-20Rα Polyclonal Antibody



Western Blot analysis of LOVO cells using IL-20Rα Polyclonal Antibody



Immunohistochemistry analysis of IL-20R α antibody in paraffin-embedded human brain tissue.



Western blot analysis of lysate from HepG2 cells, using IL-20R α antibody.